

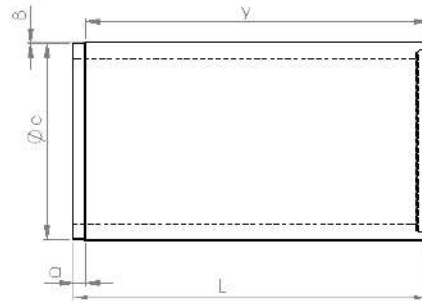
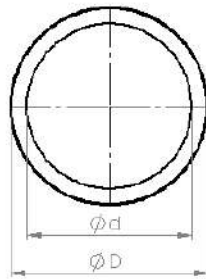
	d	D	L	w	MASS
900	880mm	1100mm	2500mm	110mm	2203Kg
1050	1030mm	1250mm	2500mm	110mm	2550Kg
1200	1160mm	1390mm	2500mm	115mm	3000Kg
1350	1330mm	1600mm	2500mm	135mm	4030Kg
1500	1430mm	1720mm	2500mm	145mm	4660Kg
1800	1770mm	2120mm	2000mm	175mm	6932Kg

JACKING CLASS 100D - SABS 677 TYPE SC

IN-USE OR TO BE SPECIFIED: DIMENSIONS AND MATERIALS SUB-CATEGORIES: HEIGHT: ANCHORS:		NAME: DATE:	DESIGN AND CHECKED BY: DATE:	DO NOT SCALE DRAWING REVISION:
NAME: DATE: APPROVED: DATE: CHECKED:	NAME: DATE: APPROVED: DATE: CHECKED:	NAME: DATE: APPROVED: DATE: CHECKED:	NAME: DATE: APPROVED: DATE: CHECKED:	TITLE: AMINTO JACKING PIPES DWG NO.: STANDARD SHEET NO.: A4
PROJECT:			SCALE:	SHEET NO.:

6 5 4 3 2 1

LEADING PIPE



JACKING CLASS 100D - SABS 677 TYPE SC

	d	D	c	a	L	y
900	880mm	1100mm	1084mm	90mm	2500mm	2410mm
1050	1030mm	1250mm	1234mm	90mm	2500mm	2410mm
1200	1160mm	1390mm	1374mm	90mm	2500mm	2410mm
1350	1330mm	1600mm	1584mm	105mm	2500mm	2395mm
1500	1430mm	1720mm	1704mm	105mm	2500mm	2395mm
1800	1770mm	2120mm	2104mm	105mm	2000mm	1895mm

DIMENSIONS SPECIFIED: DIMENSIONS ARE IN MILLIMETERS SURFACE FINISH: DIMENSION: LINEAR: ANGULAR:			UNIT:	DIMENSION (READ AS)	DO NOT SCALE DRAWING	REVISION
DESIGNED: CHECKED: APPROVED: DATE:	DRAWN: DATE:	SCALE:	DATE:	MATERIAL:	TITLE: AMINTO JACKING PIPES	DRAWING NO.: LEADING PIPE
PROJECT:					SCALE: 1:50	SHEET 01/1

6 5 4 3 2 1

D
C
B
A

D
C
B
A

A4